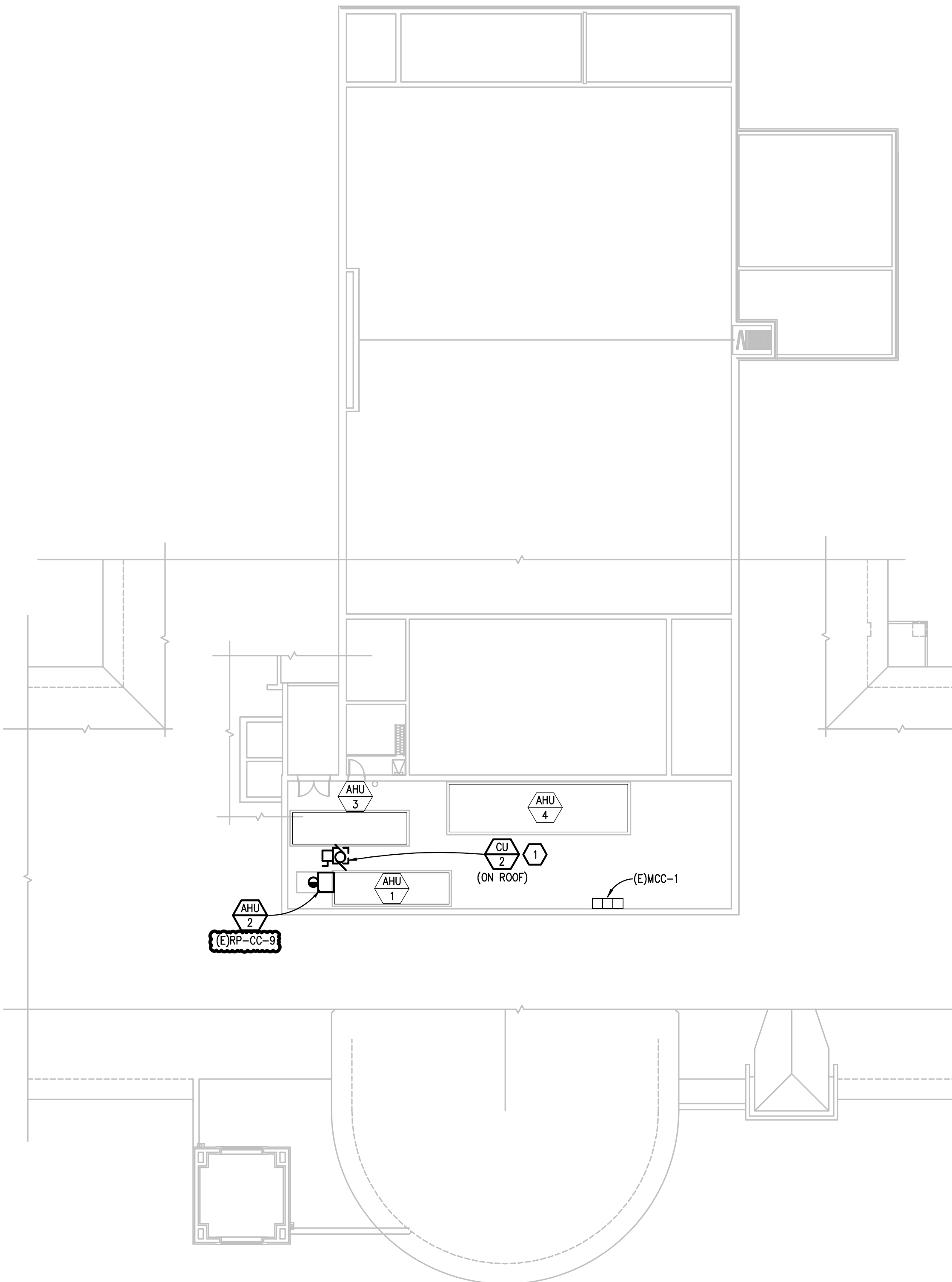
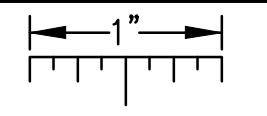
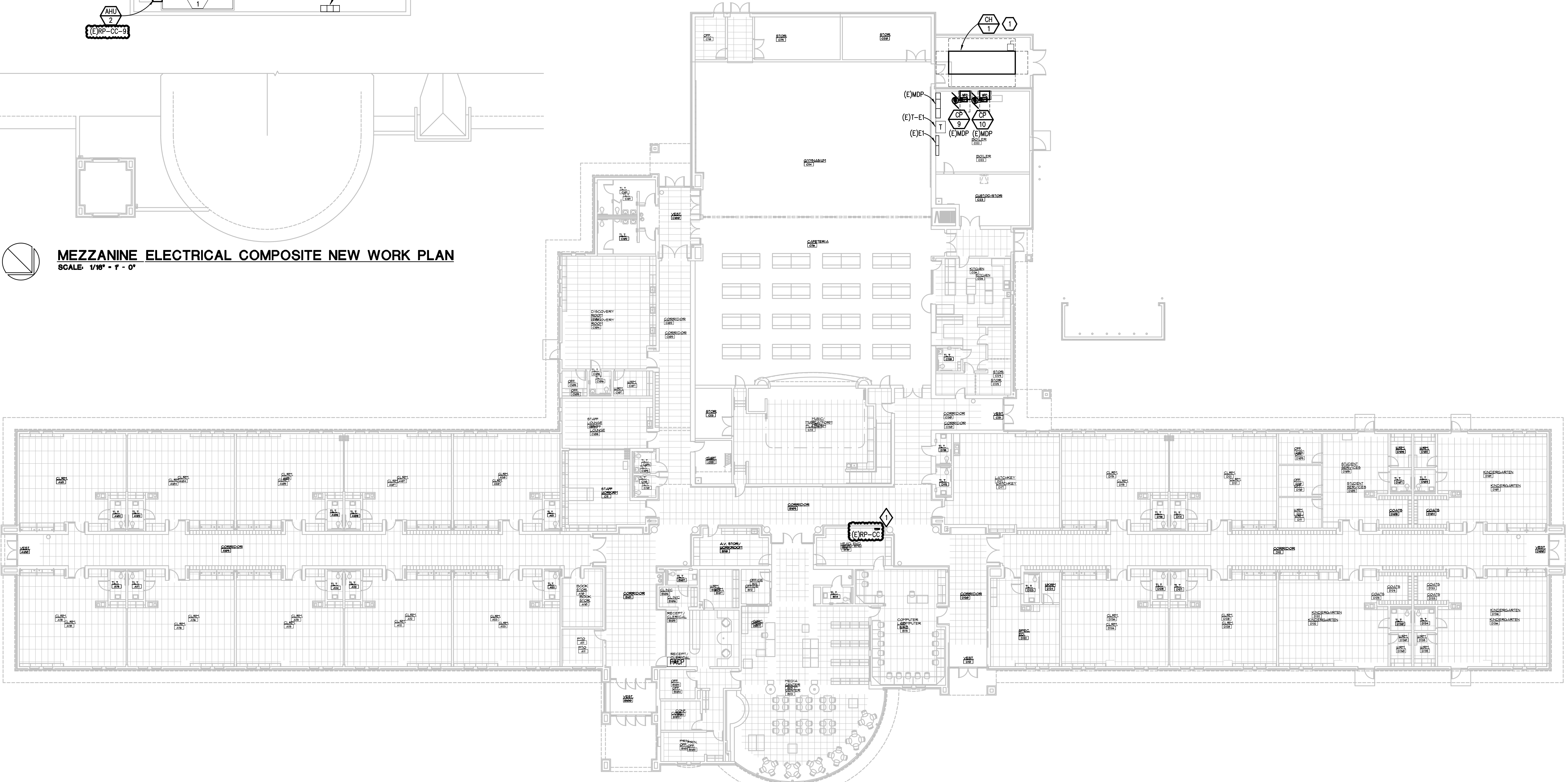


THE FOLLOWING DIMENSION EQUALS ONE INCH WHEN PRINTED TO SCALE.



MEZZANINE ELECTRICAL COMPOSITE NEW WORK PLAN
SCALE: 1/8" = 1' - 0"



FIRST FLOOR ELECTRICAL COMPOSITE NEW WORK PLAN
SCALE: 1/8" = 1' - 0"

ELECTRICAL GENERAL NOTES:

- THESE DRAWINGS REPRESENT THE GENERAL EXTENT AND ARRANGEMENT OF SYSTEMS. COORDINATE EXACT EQUIPMENT LOCATIONS, ELEVATIONS, AND FINAL CONNECTION REQUIREMENTS. PROVIDE EACH SYSTEM COMPLETE, INCLUDING ALL NECESSARY COMPONENTS, FITTINGS AND OFFSETS.
- INSTALL SYSTEMS SUCH THAT REQUIRED CLEARANCE AND SERVICE ACCESS SPACE IS PROVIDED AROUND ALL MECHANICAL AND ELECTRICAL EQUIPMENT, AND AROUND ANY COMPONENTS WHICH REQUIRE SERVICE ACCESS.
- COORDINATE AND PROVIDE ACCESS DOORS WITHIN INACCESSIBLE CEILING, SHAFT, AND CHASE AREAS FOR ALL COMPONENTS WHICH REQUIRE SERVICE ACCESS. REFER TO ARCHITECTURAL DRAWINGS FOR CEILING TYPES.
- PROVIDE SUPPLEMENTARY STEEL AS REQUIRED FOR THE PROPER SUPPORT OF ALL SYSTEMS.
- MOTOR CIRCUIT PROTECTION SHALL BE SIZED IN ACCORDANCE WITH MOTOR CIRCUIT SIZING SCHEDULES SHOWN ON "ELECTRICAL STANDARD SCHEDULES DRAWING" UNLESS OTHERWISE NOTED.
- COORDINATE THE MOUNTING HEIGHTS OF DEVICES WITH ARCHITECTURAL ELEVATIONS AND THE TRADES INSTALLING THE WORK.
- COORDINATE EXACT LOCATIONS OF ALL FLOOR SERVICE FITTINGS AND POKE-THROUGH ASSEMBLIES WITH FINAL FURNITURE LAYOUT DRAWINGS.
- REFER TO MECHANICAL SCHEDULE SHEETS FOR ELECTRICAL REQUIREMENTS FOR MECHANICAL EQUIPMENT. PROVIDE ALL CONNECTIONS, STARTERS, DISCONNECTS, ETC. AS REQUIRED BY SCHEDULES AND WHERE NOTED ELSEWHERE. VERIFY REQUIREMENTS OF ALL MECHANICAL EQUIPMENT WITH SHOP DRAWINGS SUBMITTALS. NOTIFY ENGINEER OF ANY CONFLICTS BETWEEN EQUIPMENT SUBMITTALS AND ELECTRICAL DRAWINGS. WHERE CIRCUIT SIZES ARE SHOWN ON THE ELECTRICAL DRAWINGS THAT DIFFER FROM WHAT IS INDICATED ON THE MECHANICAL SCHEDULES, PROVIDE THE CIRCUIT OF HIGHER AMPACITY.
- REFER TO TEMPERATURE CONTROLS SHEETS FOR REQUIRED FIRE ALARM CONTROL MODULES, DUCT SMOKE DETECTORS, AND MOTOR CONTROLLERS. PROVIDE ALL ACCESSORIES INDICATED.

CONSTRUCTION KEY NOTES:

- CIRCUIT MECHANICAL EQUIPMENT TO MAINTAINED BRANCH CIRCUIT.

REVISION
ADDENDUM NO.1
05-22-2026

5145 Livemore, Suite 100
Troy, Michigan 48066-8276
www.PeterBassoAssociates.com
PBA Project No.: 22081004.03
Peter Basso Associates
CONSULTING ENGINEERS

PROJECT TITLE
**ANCHOR BAY SCHOOL DISTRICT
MACONCE ELEMENTARY SCHOOL
HVAC Upgrade**
5201 County Line Road, Casco, MI 48064

Not for Construction
SHEET TITLE
**ELECTRICAL COMPOSITE NEW
WORK PLAN**
DATE
05-1-2026
ISSUE
CONSTRUCTION
DOCUMENTS
SHEET No.
E0.3

g:\2026\2026-0034-00\CAD\53 macconce es hvac upgrade\2026-0034-53-ED-CMP1.dwg, ED.3, 5/22/2026 9:46:09 AM, Nathan D.B. Hand, Peter Basso Associates Inc.